

Wear-Bow™

Wear-Resistant Elbow



*See Wear-Bow™
in action at
[www.wear-bow.com!](http://www.wear-bow.com)*

Industries:

- Power
- Cement
- Grain
- Glass & Fiberglass
- Petroleum
- Gypsum
- Coal
- Fly-Ash
- Sand & Gravel
- Roofing
- Manufacturing
- Borax
- Corn
- Sugar
- Coffee
- Pulp & Paper
- Talc
- And Many More!

Features & Benefits

Wear-Con **Wear-Bow™** Wear-Resistant Elbow is aerodynamically designed to reduce material contact along the pipe wall, minimizing product degradation and wear. The patented design of **Wear-Bow™** is self-cleaning and forces material to accumulate in the impact zone, serving as a natural wear-resistant barrier.

Installation

Wear-Con **Wear-Bow™** can easily be installed by flanging, coupling, or welding.

Technical Specifications

By design, material flowing through the **Wear-Con Wear-Bow™** accumulates in the impact zone and moves slowly upward and out. Incoming material is deflected at a 90° angle, with minimum resistance and no impact damage (see video demonstration at www.wear-bow.com). This revolutionary design extends service life by nearly eliminating the wear to the outer wall inherent in typical elbows. **Wear-Bow™** requires a material to air-flow ratio of no less than 3:1.

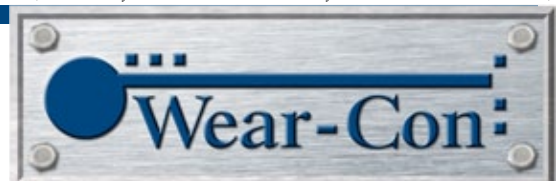
Sizes

Wear-Bow™ is easily retrofitted into existing systems, replacing both short and long radius elbows. With sizes from 2" to 10" and fitting all flanges and pipe connections in these sizes; both stub-end and flanged-end versions; and castings in iron, stainless steel, and other alloys; **Wear-Bow™** can be used in a variety of applications, including areas where space is limited (see reverse for standard sizes).

(See reverse for **Wear-Bow™** additional information and standard sizes.)

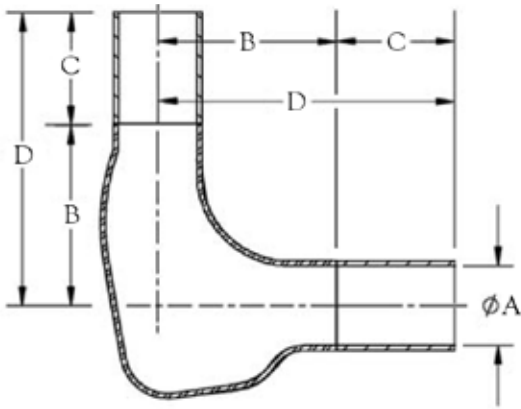
2845 E. Heartland Drive
Liberty, MO 64068

888-4WEARCON (888-493-2726)
816-587-1923 • Fax 816-587-2055
info@wearcon.com
www.wearcon.com

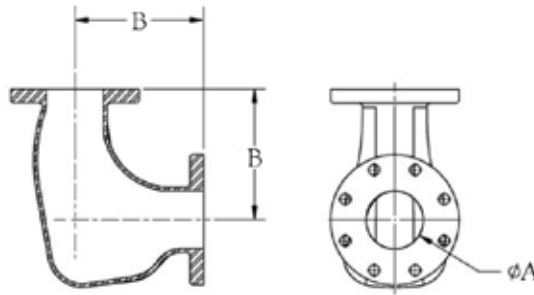


Wear-Bow™

Wear-Resistant Elbow



Type 2: Stub-End



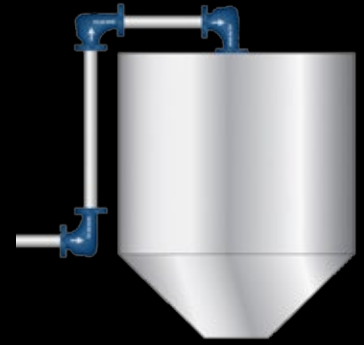
Type 4: Flanged

Standard Sizes* (Imperial & Metric)

Size	DIM ØA	DIM B	DIM C	DIM D	SS / Iron Type 2	SS / Iron Type 4
2"	2"	6 1/2"	3"	9 1/2"	6.6 lbs	16 lbs
51 mm	51 mm	165 mm	76 mm	241 mm	2.9 kg	7.2 kg
2 1/2"	2 1/2"	7"	3 3/4"	10 3/4"	9 lbs	28 lbs
64 mm	64 mm	178 mm	95 mm	273 mm	4.1 kg	12.6 kg
3"	3"	7 3/4"	4 1/2"	12 1/4"	15.2 lbs	50 lbs
76 mm	76 mm	197 mm	114 mm	311 mm	6.8 kg	22.5 kg
4"	4"	9"	6"	15"	28 lbs	60 lbs
102 mm	102 mm	229 mm	152 mm	381 mm	12.6 kg	27.0 kg
5"	5"	10 1/4"	7 1/2"	17 3/4"	40 lbs	75 lbs
127 mm	127 mm	260 mm	191 mm	451 mm	18.0 kg	33.8 kg
6"	6"	11 1/2"	9"	20 1/2"	50 lbs	160 lbs
152 mm	152 mm	292 mm	229 mm	521 mm	22.5 kg	72.0 kg
8"	8"	14"	12"	25"	75 lbs	210 lbs
203 mm	203 mm	356 mm	305 mm	635 mm	33.8 kg	94.5 kg
10" & 12" Special Order						
*All weights and measures are approximate						

Part Numbers

Size	2"	2 1/2"	3"	4"	5"	6"	8"	10"
Type 2	WCWB-0290-S	WCWB-02590-S	WCWB-0390-S	WCWB-0490-S	WCWB-0590-S	WCWB-0690-S	WCWB-0890-S	WCWB-1090-S
Type 4	WCWB-0290-F	WCWB-02590-F	WCWB-0390-F	WCWB-0490-F	WCWB-0590-F	WCWB-0690-F	WCWB-0890-F	WCWB-1090-F



Additional Information:

- Wear-Bow™ is available standard in ASTM Class 30 Grey Iron. Other alloys available upon request.
- Flanges are available in: ANSI, DIN, & JIS.
- Stub-End Wear-Bow™ can be used for compression coupling tuning & piping.
- Plain-End Wear-Bow™ fits all sizes of ANSI tubing; schedule 10, 40, & 80 piping; and DIN standards.
- Special designs & fittings available upon request.



888-4WEARCON (888-493-2726)
816-587-1923 • Fax 816-587-2055
info@wearcon.com
www.wearcon.com

2845 E. Heartland Drive
 Liberty, MO 64068