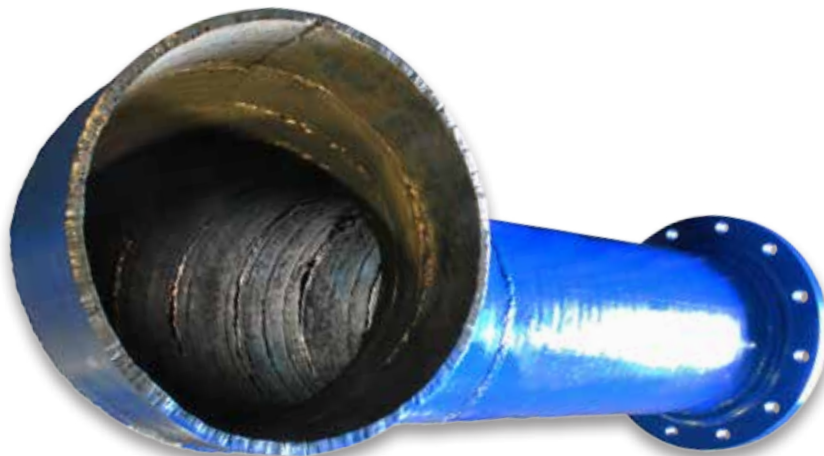


# WC700P Plus™

Chrome Carbide Wear Pipe



## Features & Benefits

Wear-Con **WC700P Plus™** Chrome Carbide Wear Pipe provides excellent resistance to severe abrasion, erosion, and impact. Lasting up to 12 times longer than mild steel pipe, **WC700P Plus™** can be hardened on either the interior or the exterior, making it great for use in wide variety of applications. **WC700P Plus™** is easy to install, offers lower life cycle costs, and can be custom-fabricated to aid pipe design or replacement.

## Installation

Wear-Con **WC700P Plus™** Pipe can be easily installed by flanging, coupling, or welding.

## Technical Specifications

With higher chromium carbide content, **WC700P Plus™** Pipe provides a hardness from 60 to 64 HRC, along with the ability to withstand temperatures up to 1000°F.

## Sizes

Wear-Con **WC700P Plus™** is available in an array of sizes and thicknesses. See chart below.

## Options

Wear-Con also offers a **WC700XTP™** Chrome Carbide Wear Pipe with a unique chromium carbide overlay on a stainless steel base plate is designed for areas with severe impact abrasion, sliding abrasion, and corrosion resistance. **WC700XTP™** can be cut to your specific needs.

Standard Sizes			
Thickness	Diameter		Length
5/16"	4" (ID)	6" (ID)	up to 118"
3/8"	8" (ID)	10" (ID) 12" (ID) 14" (OD) 16" (OD)	up to 118"

(See reverse for **WC700P Plus™** Pipe applications.)

2845 E. Heartland Drive  
Liberty, MO 64068

888-4WEARCON (888-493-2726)  
816-587-1923 • Fax 816-587-2055  
info@wearcon.com  
www.wearcon.com



# WC700P Plus™

Chrome Carbide Wear Pipe



WC700P Plus™ Spools



WC700P Plus™ Tees



WC700P Plus™ Elbows

(See reverse for WC700P Plus™ Pipe information.)



888-4WEARCON (888-493-2726)  
816-587-1923 • Fax 816-587-2055  
info@wearcon.com  
www.wearcon.com

## Fabrications:

- Spooled to Length
- Bends
- Attachment of:
  - Flanges
  - Weld Rings
  - Couplings
- Tees
- Wyes
- Laterals

## Applications:

- Pipes and Elbows for:
  - Vacuum Trucks
  - Conduit
  - Dust Collectors
  - Clinker Handling
  - Finish Cement
  - Waste Fuels
  - Raw Grain
  - Raw Silica
  - Trim Fan Housings
  - Dirty Water Piping
  - And Many More!

2845 E. Heartland Drive  
Liberty, MO 64068