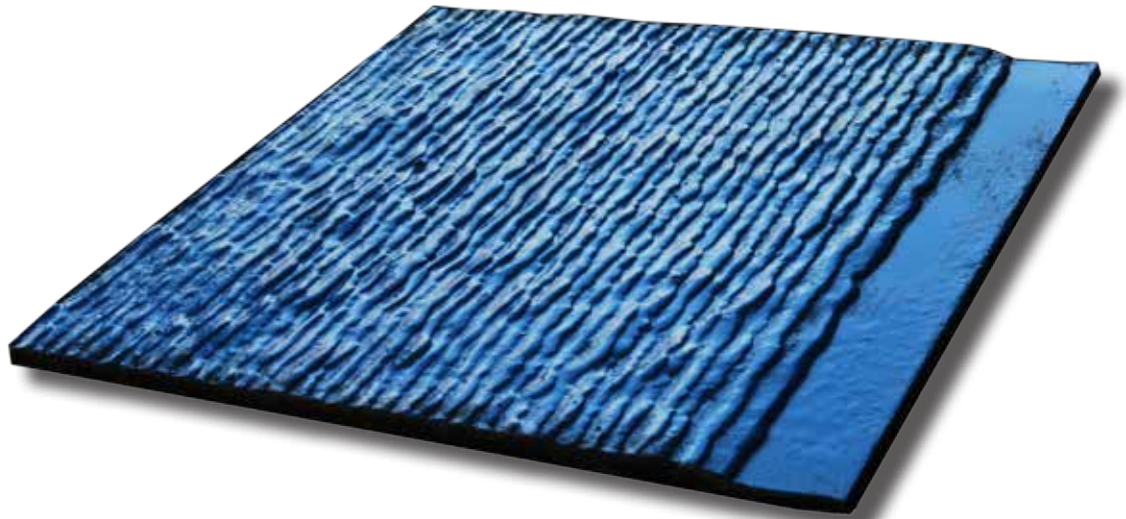


FEATHERCLAD

# FeatherClad™

Ultra-Thin Hardfaced Wear Plate



## Features & Benefits

Wear-Con **FeatherClad™** Ultra-Thin Hardfaced Wear Plate contains a high volume of chromium carbide, providing excellent resistance to wear. With an ultra-thin profile, **FeatherClad™** is lighter and thinner than conventional hardfaced wear plates, providing all of the strength at fraction of the weight and thickness for areas with extreme wear where weight or clearance is a concern.

## Installation

**FeatherClad™** is easily installed by welding a mild steel “L” bracket, stud, or threaded cylinder; plug welding; or joining with a mild steel plate to the back (see attachment diagrams on reverse).

## Technical Specifications

At 68 HRC, **Wear-Con FeatherClad™** is harder than quartz, yet is thin, flexible, and light, weighing only a fraction of mild steel.

## Sizes

**FeatherClad™** is 5/32” thick and available in 48” x 96” (208 lbs.) sheets. It can be utilized in tubes as small as 4 inches in diameter.

(See reverse for **FeatherClad™** applications.)

2845 E. Heartland Drive  
Liberty, MO 64068

888-4WEARCON (888-493-2726)  
816-587-1923 • Fax 816-587-2055  
info@wearcon.com  
www.wearcon.com

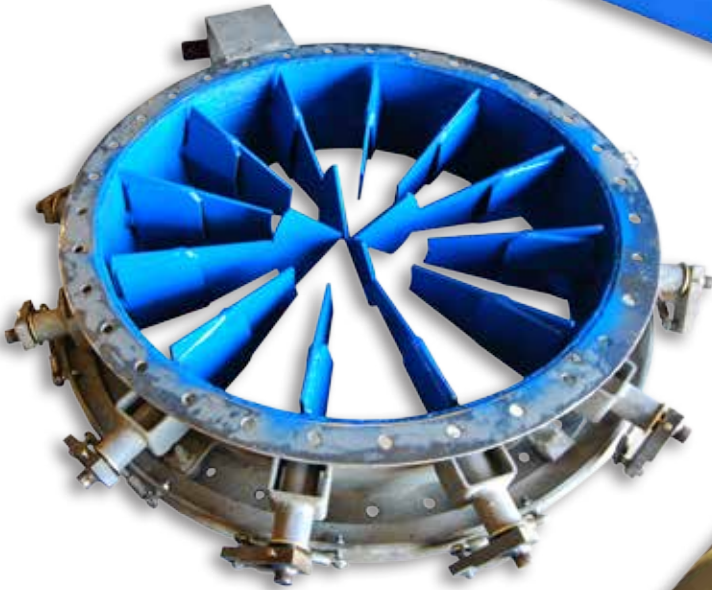


# FeatherClad™

Ultra-Thin Hardfaced Wear Plate



FeatherClad™ Lined Chute



FeatherClad™ Lined Damper



FeatherClad™ Piping

(See reverse for FeatherClad™ information.)



888-4WEARCON (888-493-2726)  
816-587-1923 • Fax 816-587-2055  
[info@wearcon.com](mailto:info@wearcon.com)  
[www.wearcon.com](http://www.wearcon.com)

## Applications:

- Pipework
- Elbows
- Fans
- Classifiers
- Separator Vanes
- Hoppers
- Vibrating Feeders
- Buckets
- Deflector Blades
- And Many More!

2845 E. Heartland Drive  
Liberty, MO 64068