

Fortify™

Epoxy Polymer Concrete Patch Kit



Features & Benefits

Wear-Concepts' Fortify™ a three-component, trowelable or pourable epoxy polymer concrete used for the fortification of chemical resistant floors, pads, curbing, trenches and sumps. Fortify™ is well suited for the fortification of floors, pads, trenches, and other structures requiring resistance to acids, bleaches, alkalis, solvents and other corrosive chemicals. Fortify™ exhibits superior resistance to many acids including 50% sulfuric, 37% hydrochloric, phosphoric acid, as well as caustic solutions, hypochlorite bleaches and other chemicals. The material exhibits excellent bond strength to concrete and physical properties at least three times that of standard concrete. Fortify™ is suitable for use in areas exposed to heavy traffic and abuse.

Installation

Wear-Concepts' Fortify™ is placed by casting into forms, or by screeding into place as an overlay on floor slabs and concrete pads. Fortify™ flows well into forms and is easily screeded into place for overlay applications and finished immediately with steel finishing trowel. Fortify™ cures rapidly, offering a quick turnaround with minimal downtime for maintenance and new construction applications. For a more pourable product reduce the amount of aggregate added to suit your needs.

Technical Specifications

Wear-Concepts' Fortify™ Components consist of: Resin, Hardener & three 10lb. bags of Aggregate. It also comes with nitrile gloves and a trowel. Wet density: 134-lbs./ft³. Absorption (ASTM C-413) 0.05%. Bond Strength to concrete failure Coefficient of thermal expansion (ASTM C-531) 12 x 10⁻⁶ in/°F. Color Gray. Compressive Strength (ASTM C-579) 15,700 psi. Flexural Strength (ASTM C-580) 3,100 psi. Tensile Strength (ASTM C-307) 2,150 psi.

Sizes

Fortify™ is available in 40-lb multi-pack units. Multi-pack units contain premeasured resin, hardener, aggregate in three bags, gloves, and a trowel. Part #40833.

(See reverse for Fortify™ applications.)

40lb Kit Coverage:

- .33 cubic feet
- 1" thick = 4 sq. ft.
- 1/2" thick = 8 sq. ft.
- 1/4" thick = 16 sq. ft.

Pot Life:

- 50°F forty minutes.
- 77°F twenty five minutes.

Initial Set Time:

- 50°F six to eight hours.
- 77°F two to four hours.

Final cure:

- 50°F seven days.
- 77°F five days.

Notice:

- High temperatures will accelerate the cure time.
- Lower temperatures will retard the cure time.
- Not recommended for repair if material mix is below 40°F or above 85°F.

2845 E. Heartland Drive
Liberty, MO 64068

888-4WEARCON (888-493-2726)
816-587-1923 • Fax 816-587-2055
info@wearcon.com
www.wearcon.com



Fortify™

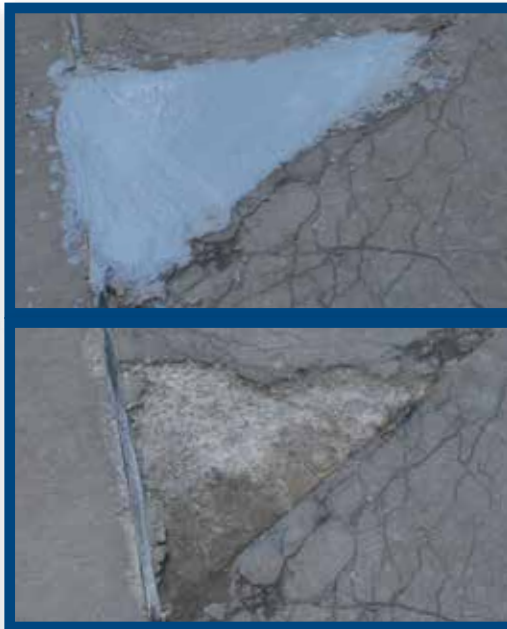
Epoxy Polymer Concrete Patch Kit



Wear-Concepts' Fortify™ used to patch damaged dock edge.



Fortify™ freshly mixed.



Spalding dock surface - before & after

(See reverse for Fortify™ information.)



888-4WEARCON (888-493-2726)
 816-587-1923 • Fax 816-587-2055
info@wearcon.com
www.wearcon.com

Applications:

- Process flooring areas
- Truck unloading pads
- Chemical process flooring
- Pump pads & tank piers
- Precast trenches & sumps
- Secondary containment structures
- High traffic areas
- Equipment pads
- Curbing
- Warehouse floors
- Shop floors
- Dock floors & walls
- Driveways
- Sidewalks
- Dumpster pads
- Retaining walls
- And Many More!

2845 E. Heartland Drive
 Liberty, MO 64068