

Densulate™

Internally Insulated Wear Protection System



Features & Benefits

Wear-Con Densit® Densulate™ Internally Insulated Wear Protection System is designed to protect components from erosive wear, while at the same time reducing heat loss by radiation. Densulate™ combines insulation and wear protection, consisting of an insulation layer followed by a Densit® wear protection lining. Economical and easy to install, Densulate™ eliminates the need for external insulation, lowers construction costs, and reduces component weight and size.

Installation

See reverse for Wear-Con Densit® Densulate™ installation instructions and structure.

Technical Specifications

Wear-Con Densit® Densulate™ can be used in operating temperatures up to 2190°F, with thermal conductivity at 1112°F = 0.10 W/m·K. Mortar is used to fill any gaps, and the thickness of the insulation layer depends upon operating temperatures and acceptable heat loss.

Sizes

Wear-Con Densit® Densulate™ systems vary according to process parameters including temperature, media type, and component size and geometry.

(See reverse for more technical data.)

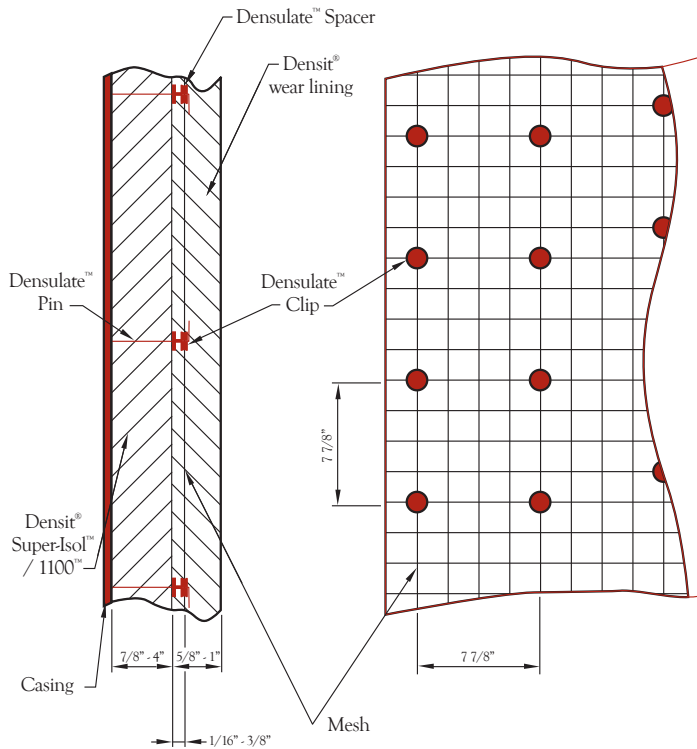
2845 E. Heartland Drive
Liberty, MO 64068

888-4WEARCON (888-493-2726)
816-587-1923 • Fax 816-587-2055
info@wearcon.com
www.wearcon.com



Densulate™

Internally Insulated Wear Protection System



Densulate™ Structure

Installation

Wear-Con Densit® Densulate™ can be installed in the following manner:

1. Weld Densulate™ pins to the inner casing of the part or component. For operating temperatures up to 750°F, mild or stainless steel components may be used. For operating temperatures above 750°F, only stainless steel components of type 1.4301 may be used.
2. Install and fix insulation (such as Densit® Super-Isol™/1100™ Densulate™ Insulation Slabs). Place Densulate™ self-fastening clips and spacers at pins.
3. Install mesh and fix by bending excess length of pins neatly into insulation.
4. Apply Densit® Bonding Compound to make a water-repellent surface.
5. Apply a Densit® wear protection lining (such as WearSpray™, WearFlex™, or WearCast™)
6. Apply Densit® Curing Compound.
7. Allow to dry. For drying times, consult the Densit® Drying Curve in the Densit® Installation Manual.

For further installation information, see the Densit® Installation Manual.

(See reverse for more information.)



888-4WEARCON (888-493-2726)
816-587-1923 • Fax 816-587-2055
info@wearcon.com
www.wearcon.com

2845 E. Heartland Drive
Liberty, MO 64068

DENS-C-WS

09-12

Wear-Con Densit® Densulate™