

WC90™ HexTile

Hexagonal Ceramic Wear Tile Sheets



Features & Benefits

Wear-Con **WC90™ HexTile** Hexagonal Ceramic Wear Tile Sheets provide ultimate wear resistance for your most abrasive applications. Lasting at least 10 times longer than mild steel, **WC90™ HexTiles** increase production time by decreasing downtime.

Installation

Attached to a 6" x 6" square of webbing material, **Wear-Con WC90™ HexTiles** can easily be installed by securing with **Wear-Con Premium Silicone** or **Wear-Con Cerami-Bond** tile adhesive.

Technical Specifications

Wear-Con WC90™ HexTiles provide resistance to wear from most other materials and working temperatures as high as 2300°F. **WC90™ HexTiles** have Moh's Scale 9 hardness; a 300,000 psi comprehensive strength; a 45,000 psi flexural strength; and a 24,000 psi tensile strength.

Sizes

Wear-Con WC90™ HexTiles are available in several thicknesses to fit your wear needs.

Standard Sizes				
Size	6" x 6"			
Thickness	1/8"	1/4"	3/8"	1/2"

(See reverse for **WC90™ Ceramic HexTile** Applications.)

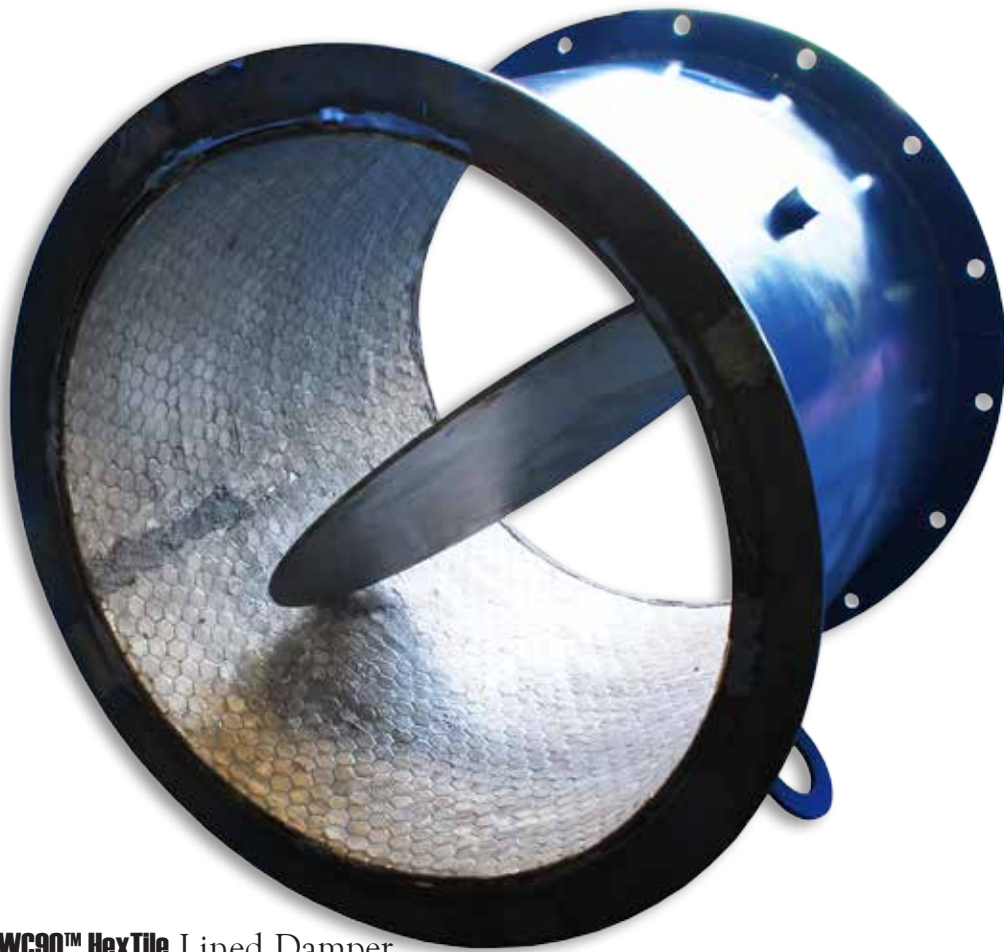
2845 E. Heartland Drive
Liberty, MO 64068

888-4WEARCON (888-493-2726)
816-587-1923 • Fax 816-587-2055
info@wearcon.com
www.wearcon.com

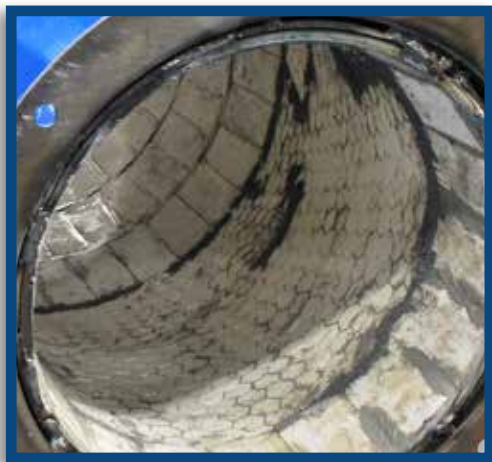


WC90™ HexTile

Hexagonal Ceramic Wear Tile Sheets



WC90™ HexTile Lined Damper



Lined with Plain & HexTile



Installing WC90™ HexTile

(See reverse for WC90™ Ceramic HexTile Information.)



888-4WEARCON (888-493-2726)
816-587-1923 • Fax 816-587-2055
info@wearcon.com
www.wearcon.com

Applications:

- Chutes
- Piping
- Cyclones
- Spouts
- Exhausters
- Hoppers
- Fans
- Pulverizers
- Drag Conveyors
- Thermocouple
- Pipe Exteriors
- And Many More!



Use with Wear-Con's
Cerami-Bond™ Tile Adhesive.

2845 E. Heartland Drive
Liberty, MO 64068

WC-HXTL

10-17